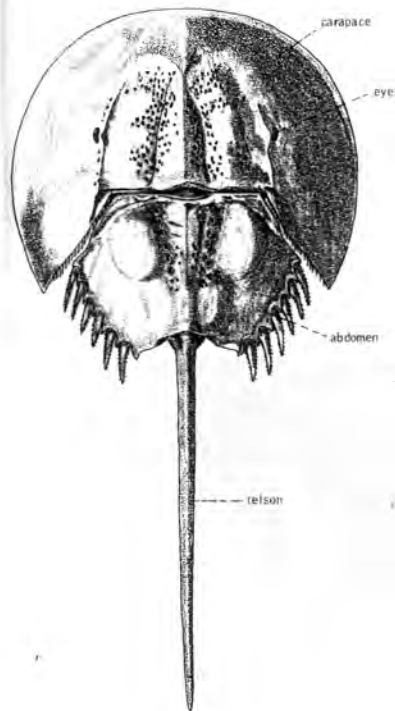
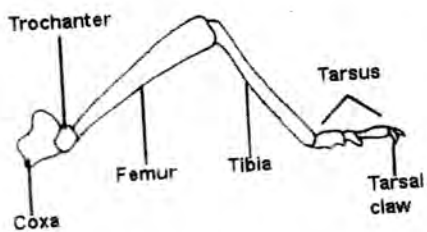


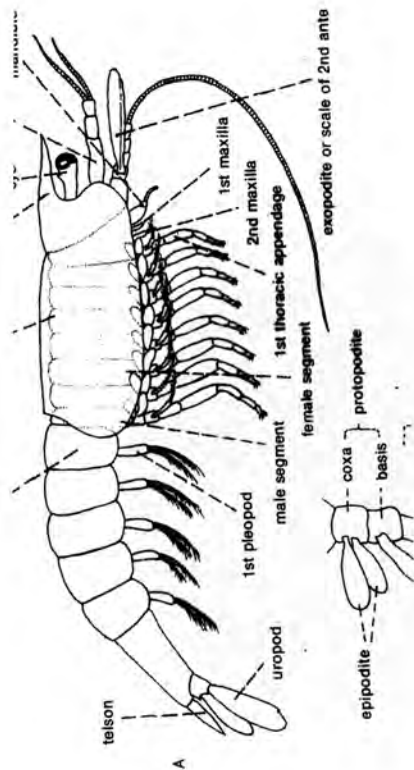
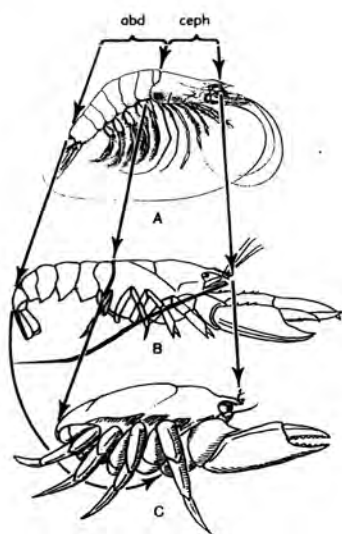
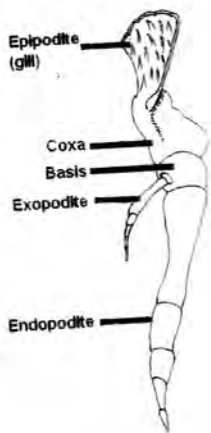
Fig. 10

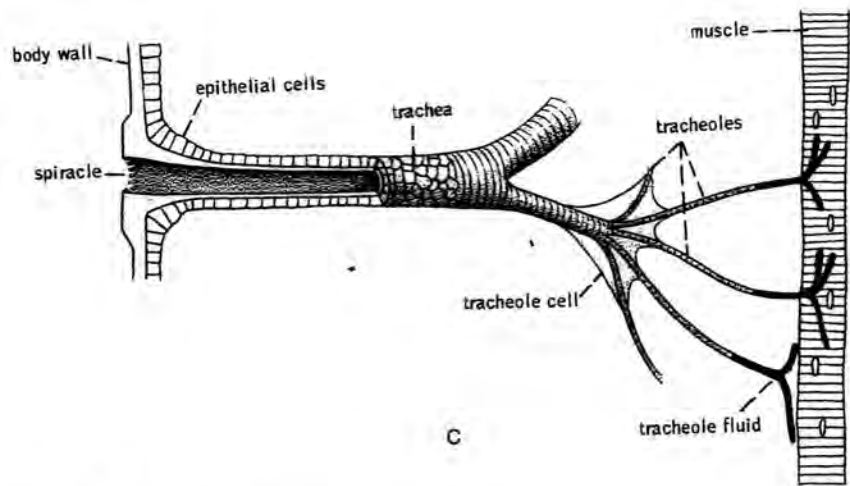


Uniramous leg (insect)

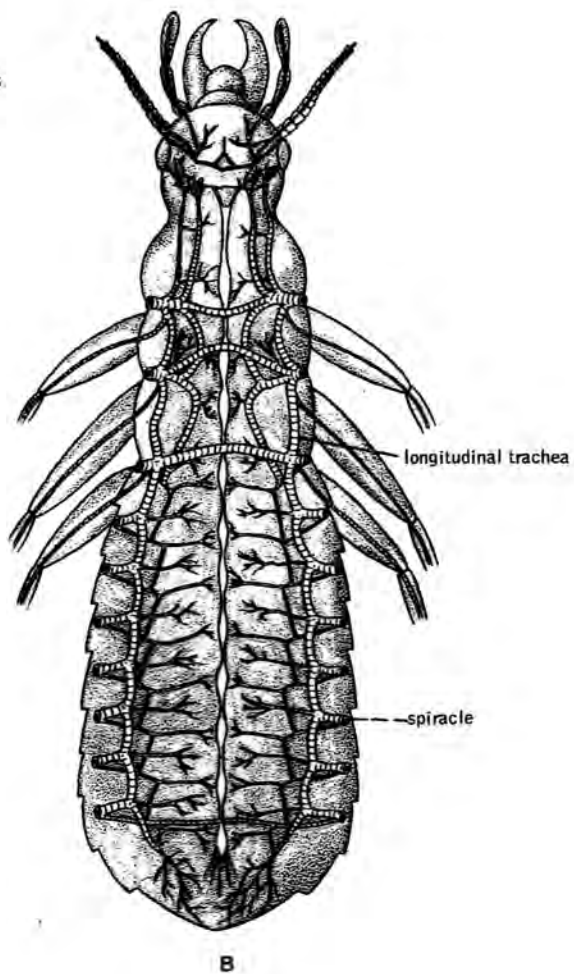


Biramous leg (crustacean)

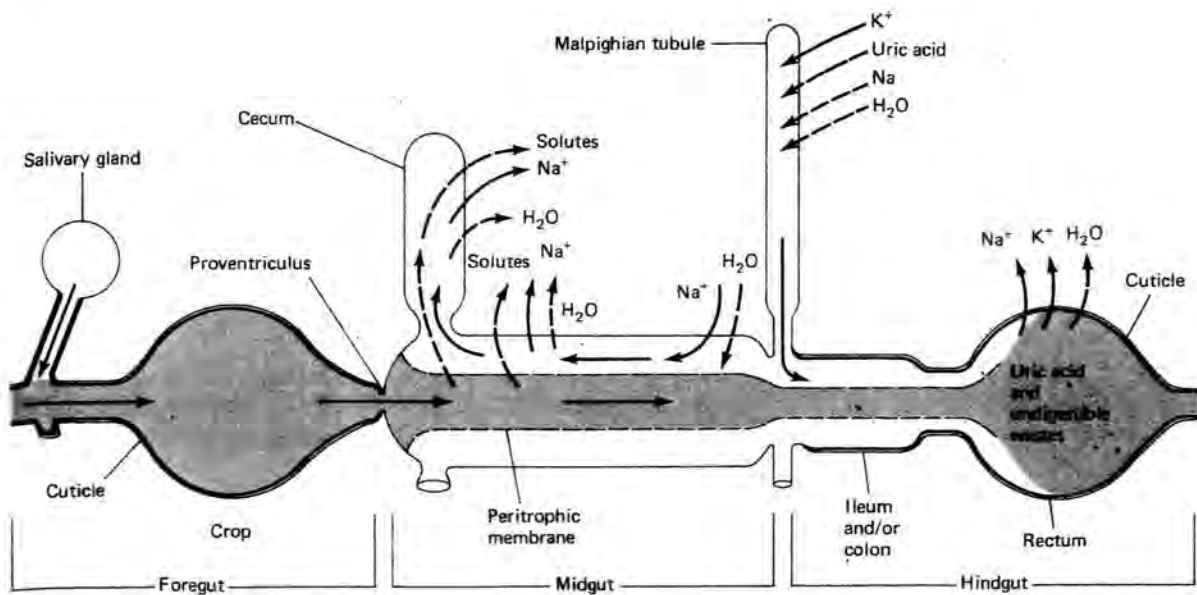




ratus



Lesson 15-3



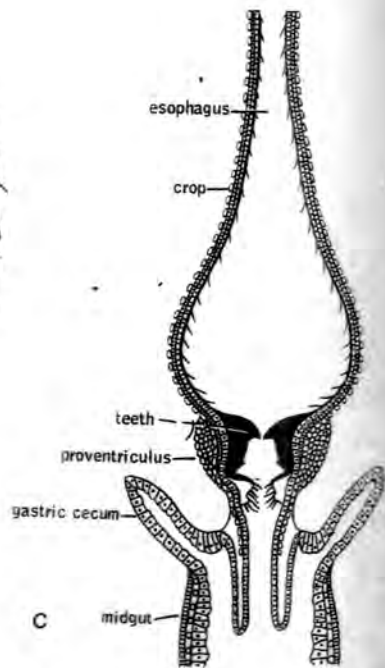
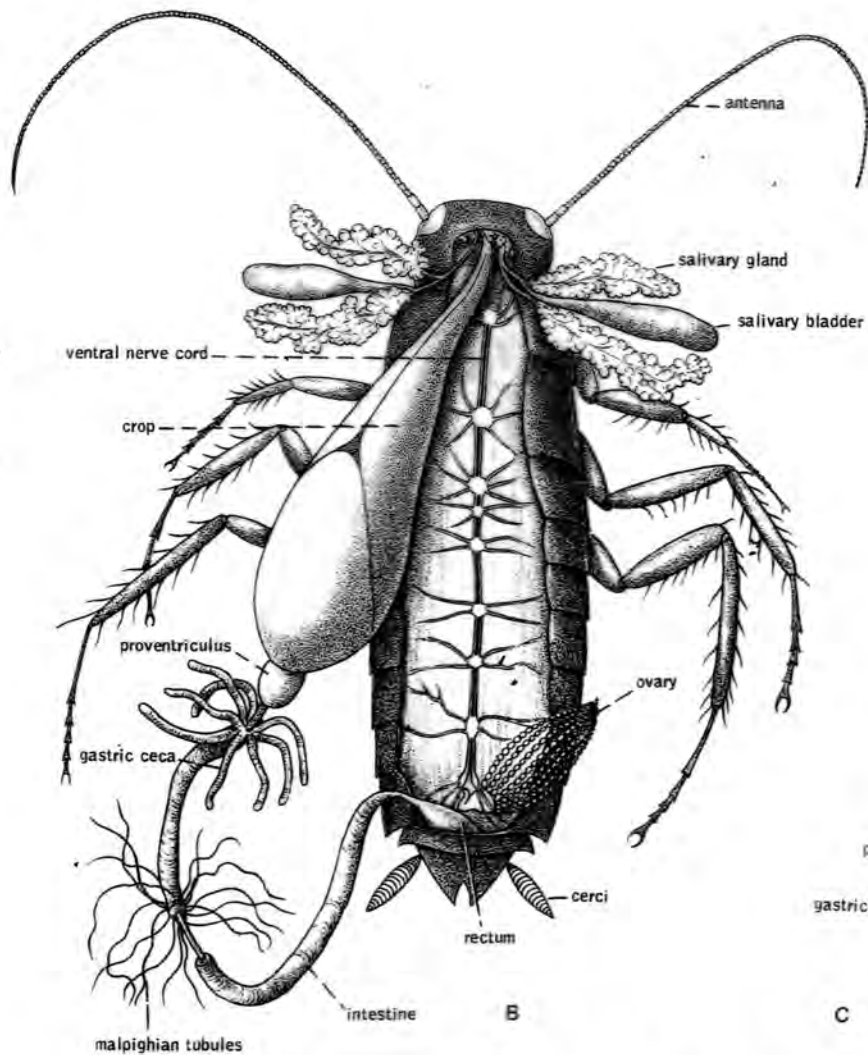
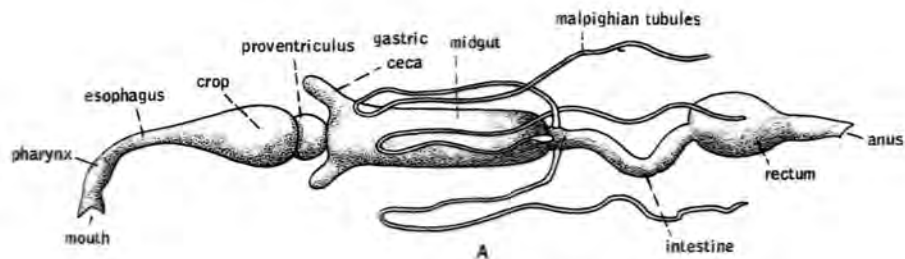


Figure 16-5 A, Schematic diagram of the digestive tract in the insect. B, Internal structure of a cockroach. C, Longitudinal section through the foregut and anterior part of the midgut of a cockroach. (A and C after Snodgrass, B after Rolleston.)